



**DURO-SHED**  
Durability in Every Shed

## 12' x 8' PATIO STONE LAYOUT

PLEASE HAVE BASE READY PRIOR TO OUR ARRIVAL

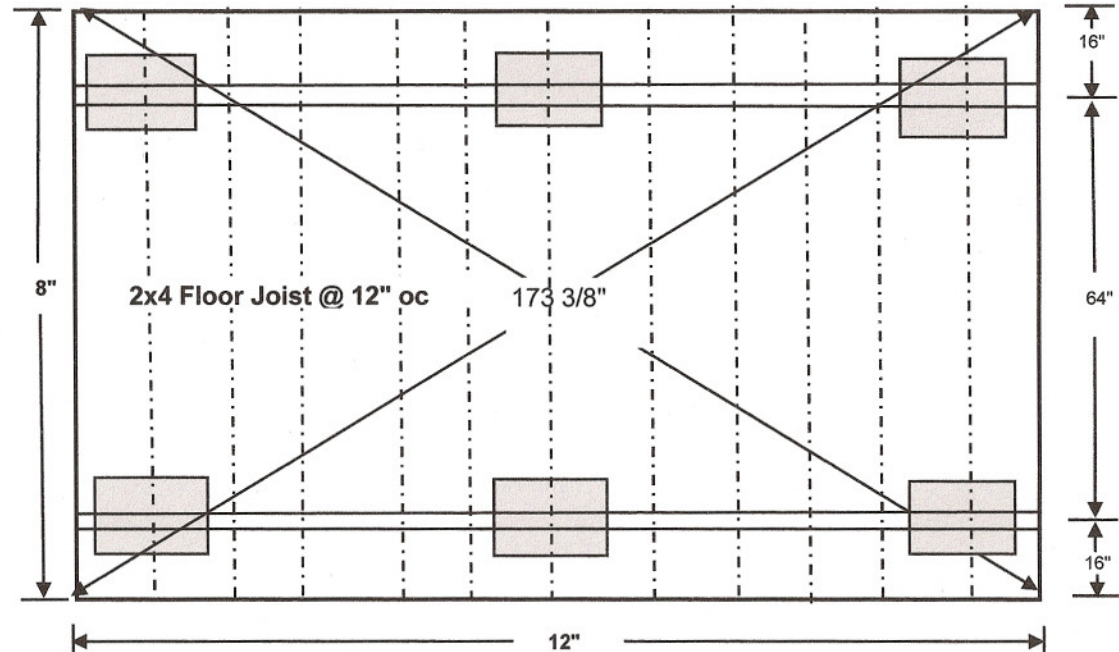
• **Please Note:**

- Use 6-18"x18" patio stones or larger.
- Keep patio stones within the "footprint" of building (2-3").
- To square up the site for your shed, measure 173 3/8" from corner to corner.
- Shed floor will be 7-8" above grade under perfect flat conditions.

- 4"x 4" Pressure Treated Runners  
18"x18" min. size patio stone on top of compactable gravel base 4" to 6" thick is recommended.

- For concrete pad use the dimensions shown as the inside measurements of the concrete forms.
- For concrete filled sono tubes/piers use the same centre as the patio stones.
- Framing Lumber Sunlied Bv Duro-Shed.

**Top View**



**Side View**

